

REVISIONS			
ZONE/LTR	DESCRIPTION	DATE	APPROVED

NOTES:

1. TO BE MANUFACTURED IN ACCORDANCE WITH LATEST REVISION OF SPECIFICATION MIL-DTL-2692.
2. THE SEAL SHALL APPEAR AS ILLUSTRATED ON BOTH SIDES OF THE FLAG
3. DESIGNATION ON SCROLLS TO BE READ FROM LEFT TO RIGHT ON BOTH SIDES OF THE FLAG.
4. ALL SCREEN PRINTING SHALL BE DONE WITH SCREENS MADE BY THE PHOTOGRAPHIC METHOD AND COLORS SEPARATED IN ACCORDANCE WITH COLORS SPECIFIED ON THE DEVICE DRAWING.
5. ALL DIMENSIONS ARE EXCLUSIVE OF HEMS.
6. FOR SEAL SEE TIOH DRAWING No. 6-2-283.

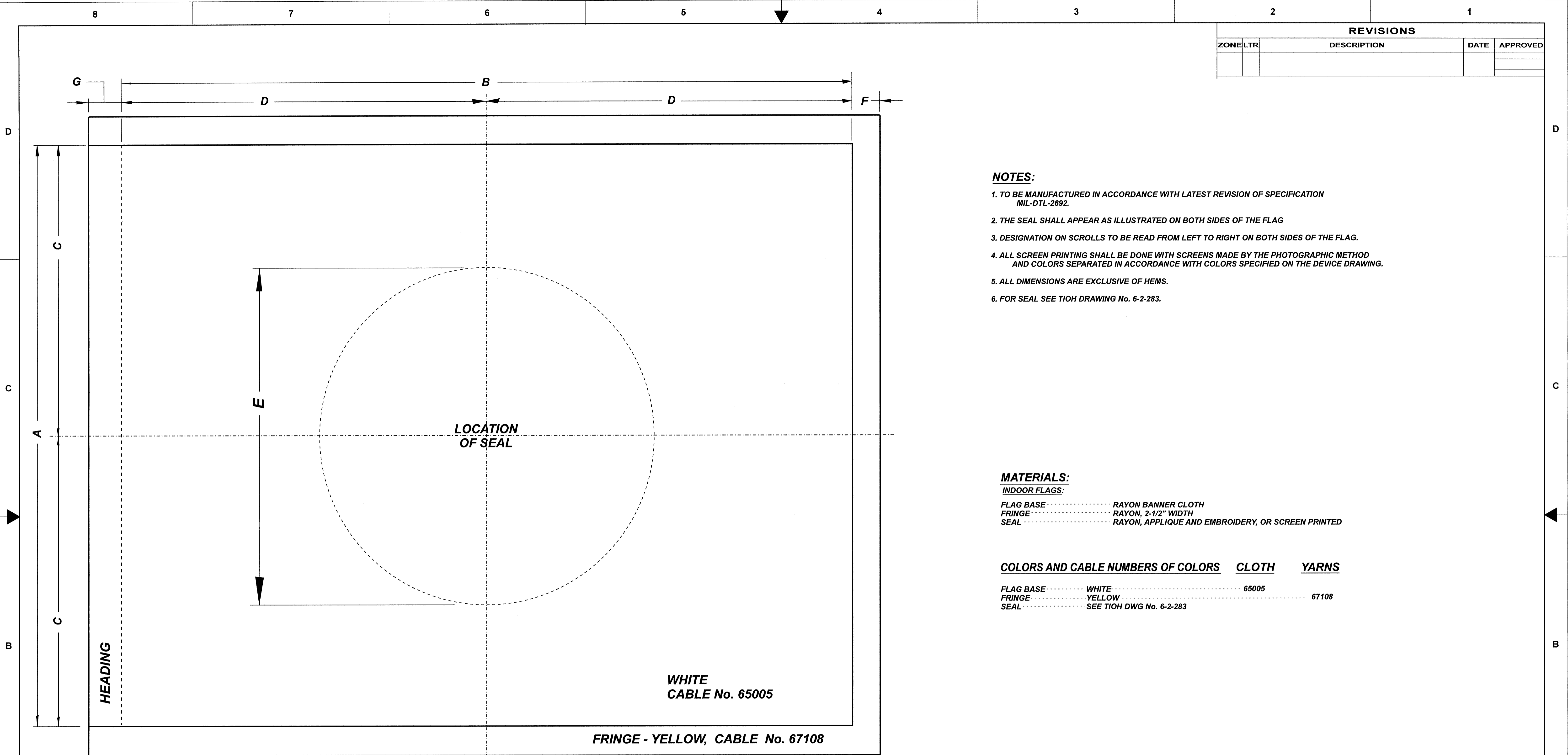
MATERIALS:

INDOOR FLAGS:

FLAG BASE RAYON BANNER CLOTH
 FRINGE RAYON, 2-1/2" WIDTH
 SEAL RAYON, APPLIQUE AND EMBROIDERY, OR SCREEN PRINTED

COLORS AND CABLE NUMBERS OF COLORS CLOTH YARNS

FLAG BASE WHITE 65005
 FRINGE YELLOW 67108
 SEAL SEE TIOH DWG No. 6-2-283



SCALE: 3" = 1' - 0" (1/4 SIZE) FOR 4' - 4" X 5' - 6" FLAG

No. OF LINE	KIND	DIMENSIONS							HEADING	
		A	B	C	D	E - DIA.	F	G	TYPE	DA DWG No.
1.	INDOOR FLAG	4' - 4" (1.32M)	5' - 6" (1.67M)	2' - 2" (66.04cm)	2' - 9" (83.82cm)	2' - 6" (76.2cm)	2-1/2" (6.35cm)	3" (7.62cm)	TYPE II	5-1-45E
2.	INDOOR FLAG	3' - 0" (0.91M)	4' - 0" (1.22M)	1' - 6" (45.72cm)	2' - 0" (60.96cm)	1' - 8" (50.8cm)	2-1/2" (6.35cm)	3" (7.62cm)	TYPE II	5-1-45E

SUPERSEDES TIOH DWG. No. 5-1-740 DTD. 25 AUGUST 1993

UNLESS OTHERWISE SPECIFIED DIMENSIONS ARE IN INCHES TOLERANCES ON FRACTIONS DECIMALS ANGLES	THE INSTITUTE OF HERALDRY, DEPARTMENT OF THE ARMY 9325 GUNSTON RD, RM S-113 FORT BELVOIR, VA 22060-5579		
	DISTINQUISHING FLAG		
	NATIONAL INTELLIGENCE UNIVERSITY		
	SIZE CODE IDENT. NO D 22571 5 - 1 - 740		
MATERIAL:	EXAMINED <i>pm</i>	CHECKED <i>pm</i>	PREPARED <i>CA</i>
APPROVED <i>Charles V. Mugno</i> CHARLES V. MUGNO DIRECTOR	SCALE		DATE 23 JUNE 2011